

Water Proofing Wall

Water leaking through dish pit wall.

Thursday, April 10, 2014

Prepared for Customer Reference

Taken 10 Photos

Mickey Perritt

Century Services





Photo 1
Source of water.



Photo 2
Pull dish machine and dirty dish table to access area.



Photo 3
Using a hammer chisel, remove a roll of tile and base tile along wall.



Photo 4

Once tile and base are removed, clean and dry sub floor.



Photo 5

Apply a thick base of polyurethane sealant.

New stainless steel base is 12" tall with a 2" flange to go under the floor tile.

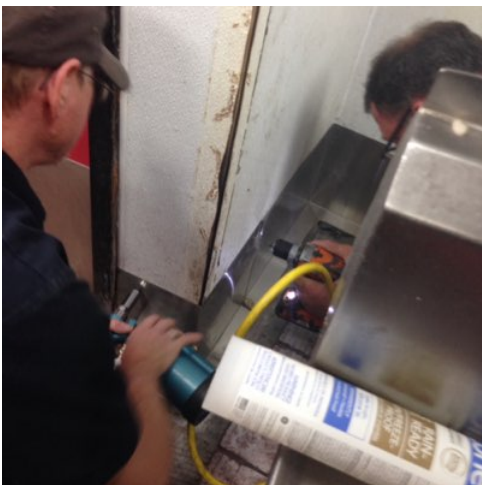


Photo 6

Apply silicone caulking to the back of the new stainless steel base.

Secure to wall with pop rivets.



Photo 7

Lay new floor tile over the new wall base.



Photo 8

Grout new tile with water resistant grout.

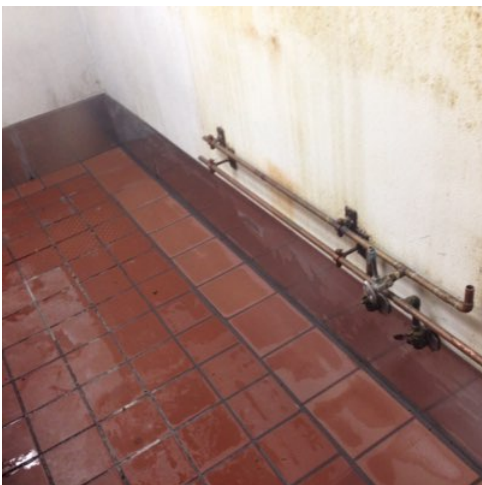


Photo 9

Photo of completed base.

Photo 10

Reinstall dish machine and dirty dish table.